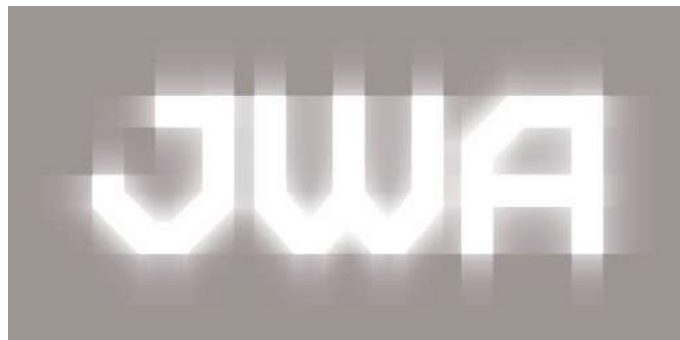
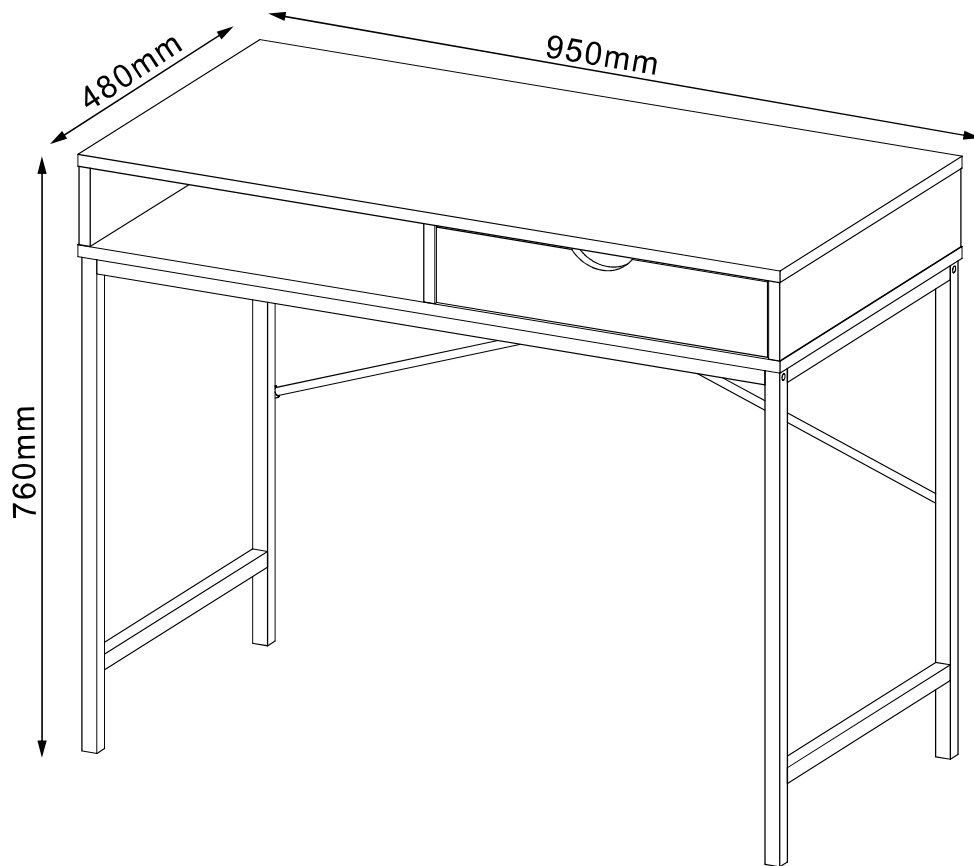


ASSEMBLY INSTRUCTION

NEAL

Desk

ITEM CODE 75141

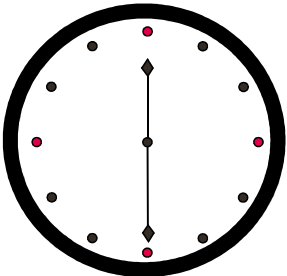
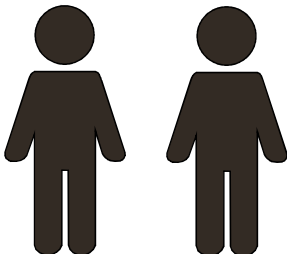



Imported by JWA Furniture Pty Ltd, Qld, Brisbane Australia.
For any assistance with assembly or for missing parts please refer to your receipt

PRE-ASSEMBLY PREPARATION

Before you start:

1. Choose a clean, level, spacious assembly area. Avoid hard surfaces that may damage the product
2. Take care when lifting. Product should be assembled as near as possible to the point of use
3. Ensure that you have all required contents for complete assembly
4. Always read the assembly instructions carefully before beginning assembly.
5. Keep all hardware parts and packaging out of reach of small children.
6. Do not over tighten the screws and bolts as this may damage the threads
7. Assembly is to be carried out by a competent adult(s) ONLY
8. During assembly, children should be kept away from the product due to possible risk to injury.
9. Do not use this item if any components are missing or damaged.
10. Please keep the instructions for future reference.

		
Allow 30min	For 2 person	Additional tools required



TIPPING WARNING





Serious or fatal injuries may occur from furniture toppling over. To help avoid this please follow the below recommendations;

- Install the provided "Tipping Kit" as per the instructions
- Never allow children to climb on or hang off of any part of this product
- Unless specifically designed to accommodate, do not set TVs or other heavy objects on top of this product

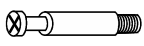

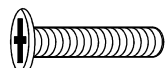
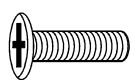
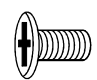
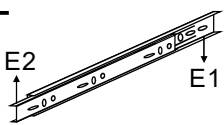

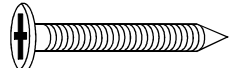
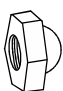
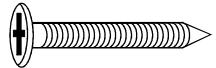

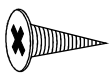

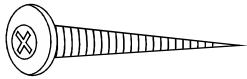
IF this product has drawers:

- Place the heaviest items in lowest drawers
- Do not open more than 1 drawer at a time as this may cause the product to become unbalanced
- Do not tamper with or remove any drawer interlocking/running system

Note: The use of the provided "Tipping Kit" may reduce but not necessarily eliminate the risk of furniture toppling over. Please use this product with caution.

This is a permanent label. Do not attempt to remove!

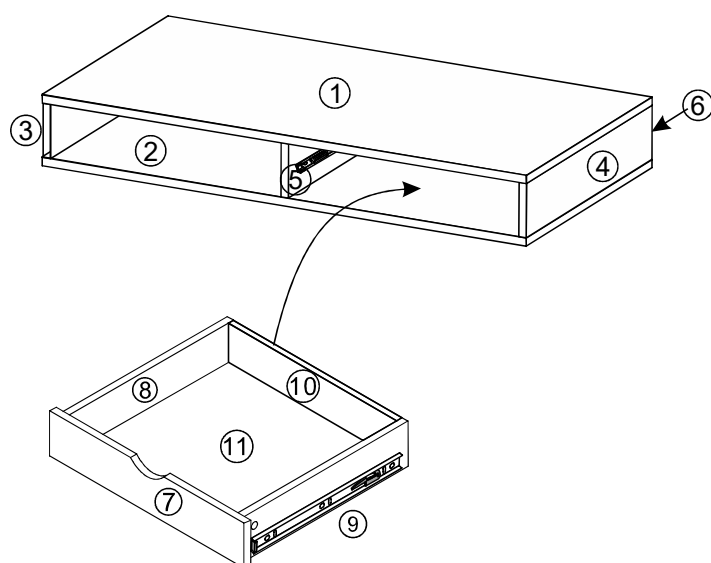
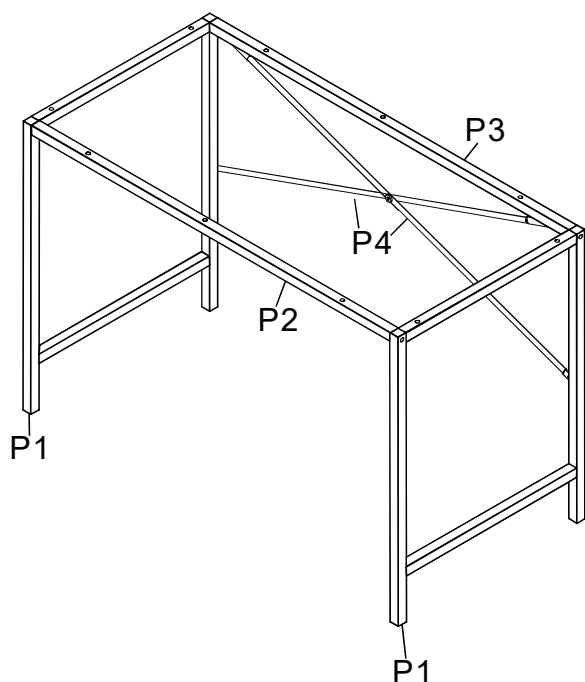
PARTS LIST

A   16pcs	B  M6X40mm 4pcs	C  M6X30mm 10pcs	D  M6X12mm 4pcs	E  2pcs
F  8x30mm 12pcs	G  ST5X50mm 4pcs	H  M4mm 1pc	I  ST5X40mm 8pcs	J  M4X25mm 1pc
K  ST3.5X14mm 10pcs	L  2pcs	M  ST4X25mm 2pcs		

1	Top panel
2	Bottom panel
3	Left panel
4	Right panel
5	Middle panel

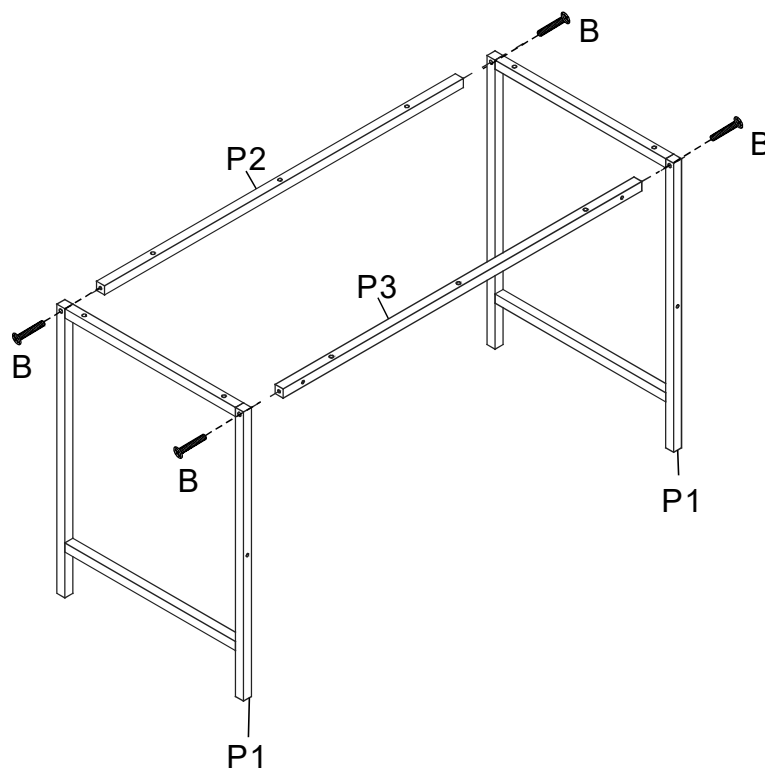
6	Back panel
7	Drawer front panel
8	Drawer left panel
9	Drawer right panel
10	Drawer back panel

11	Drawer bottom panel
P1	Main frame
P2	Front connection frame
P3	Back connection frame
P4	X frame



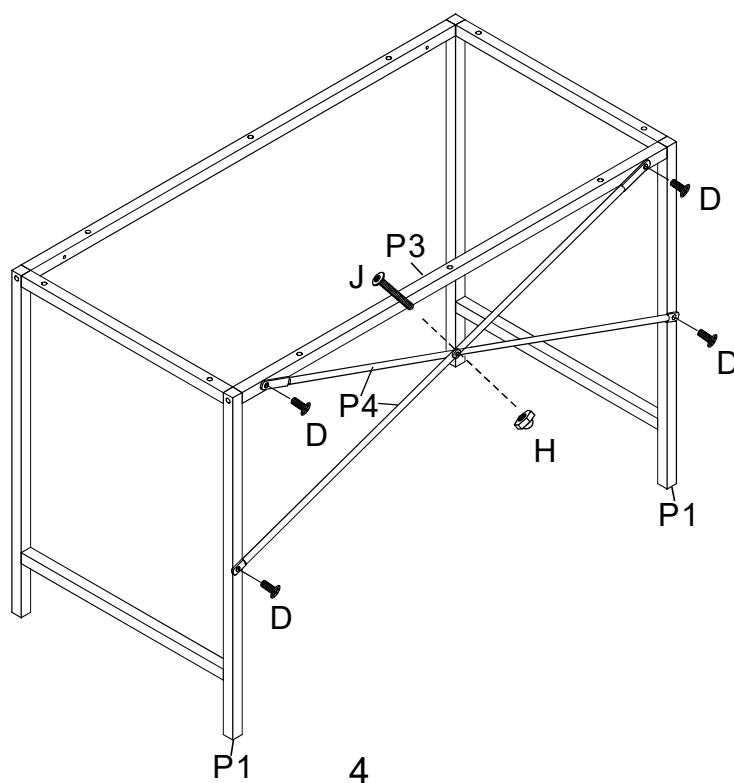
STEP 1:

1. Attach connection frames P2 and P3 to frame P1 with part B.



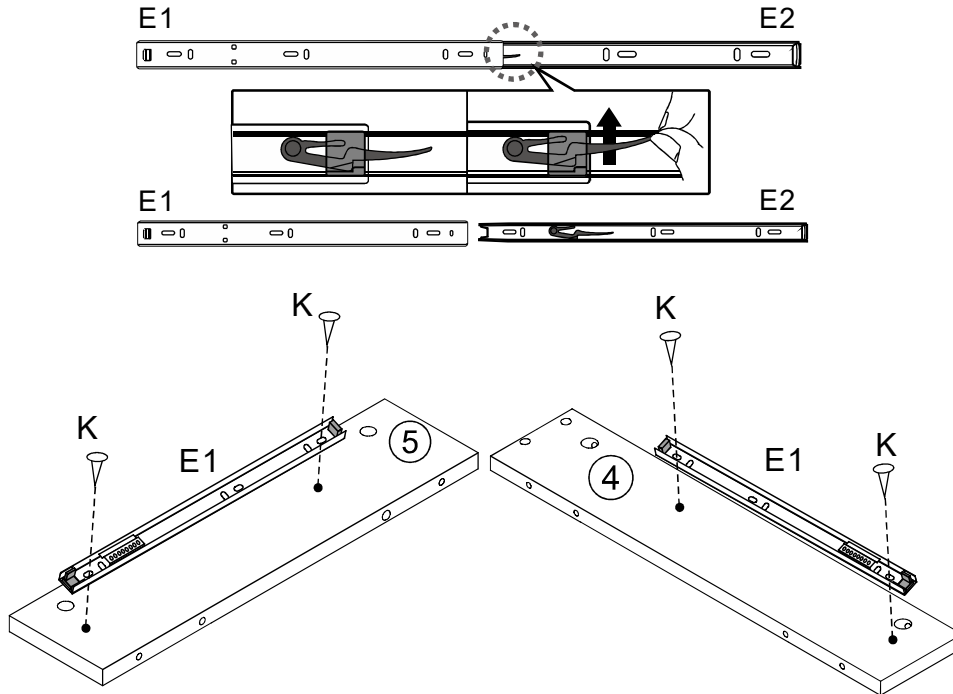
STEP 2:

1. Connect frame P4 with parts J and H.
2. Attach frame P4 to frames P1 and P3 with part D.



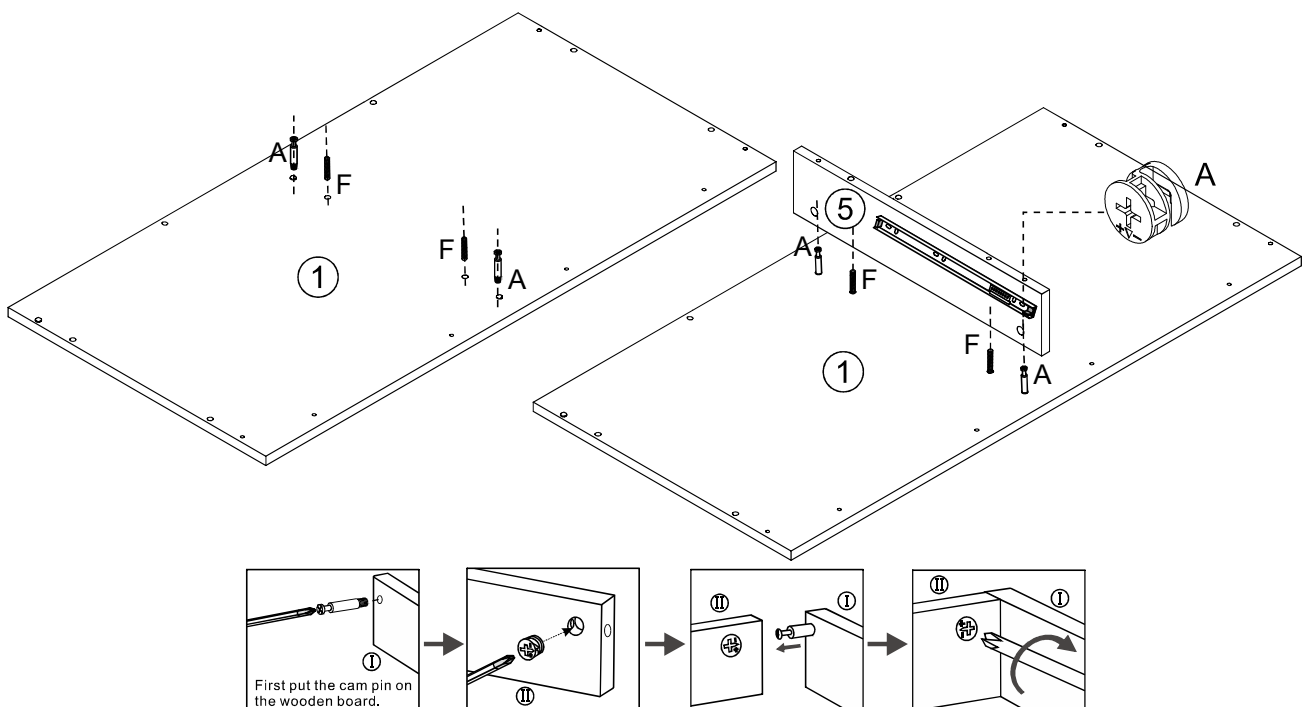
STEP 3:

1. Separate parts E1 and E2 (runners) as shown below.
2. Attach part E1 to panels 4 and 5 with part K.



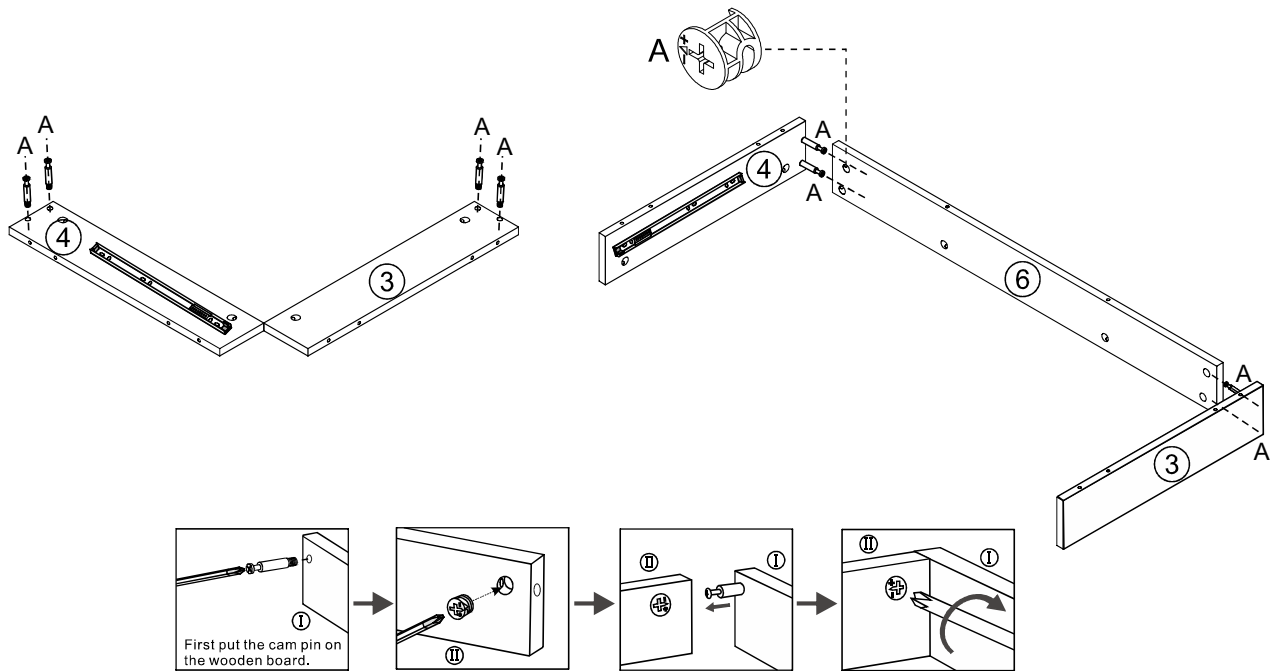
STEP 4:

1. Insert parts A and F into panel 1.
2. Attach panel 5 to panel 1 with parts A and F.



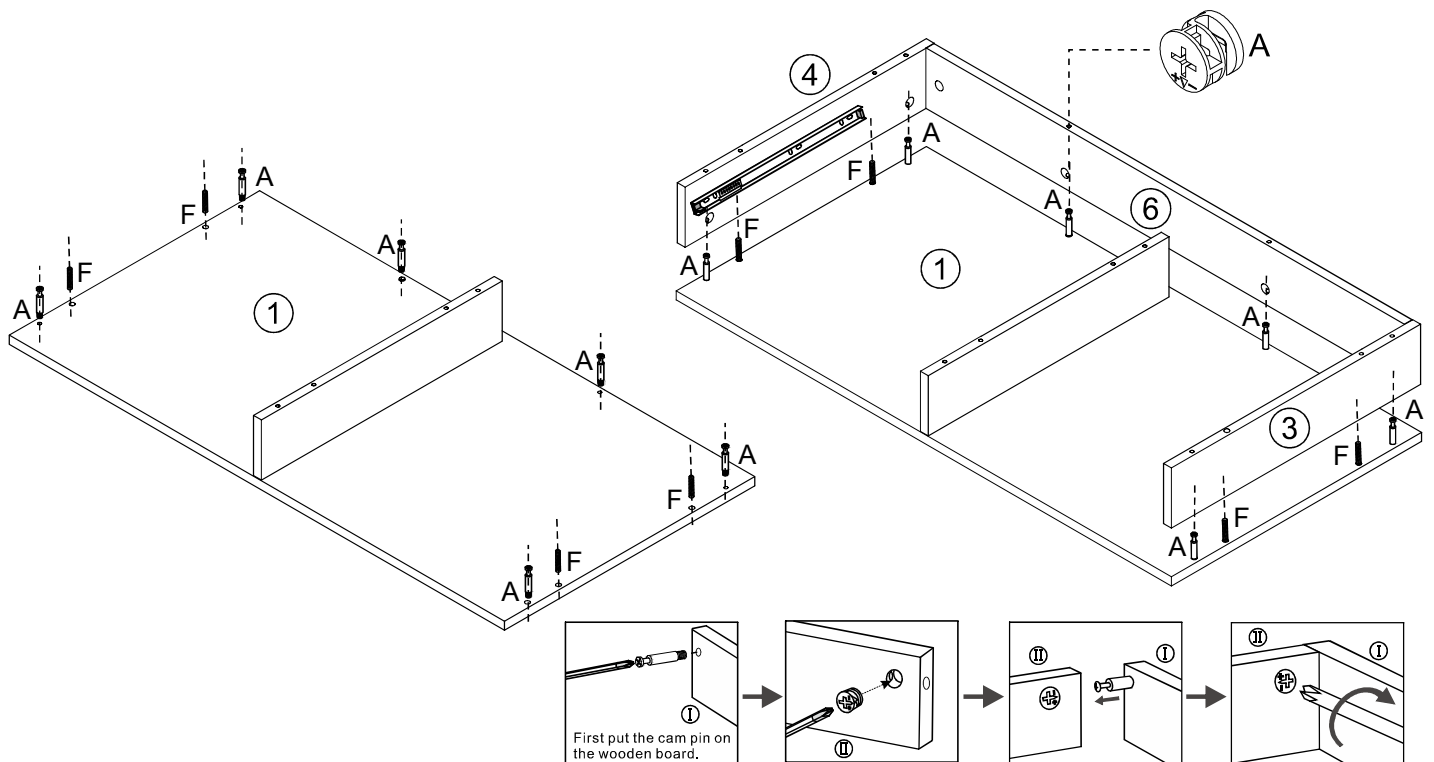
STEP 5:

1. Insert part A into panels 3 and 4.
2. Attach panels 3 and 4 to panel 6 with part A.



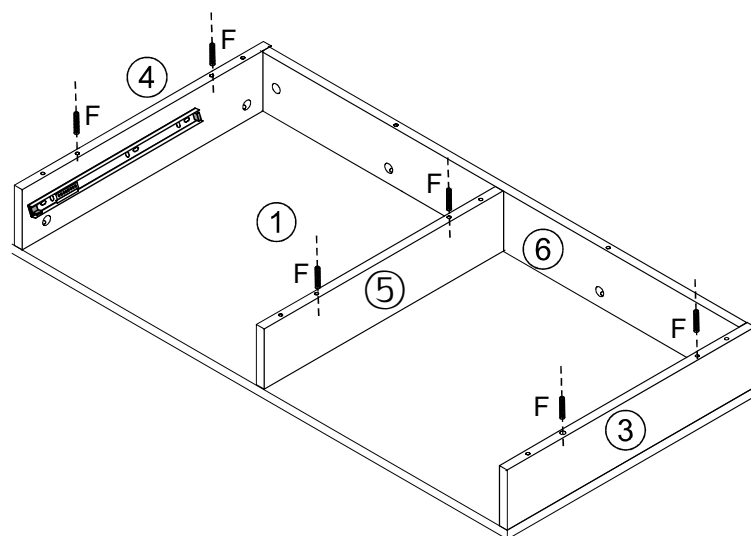
STEP 6:

1. Insert parts A and F into panel 1.
2. Attach panels 3, 4 and 6 to panel 1 with parts A and F.



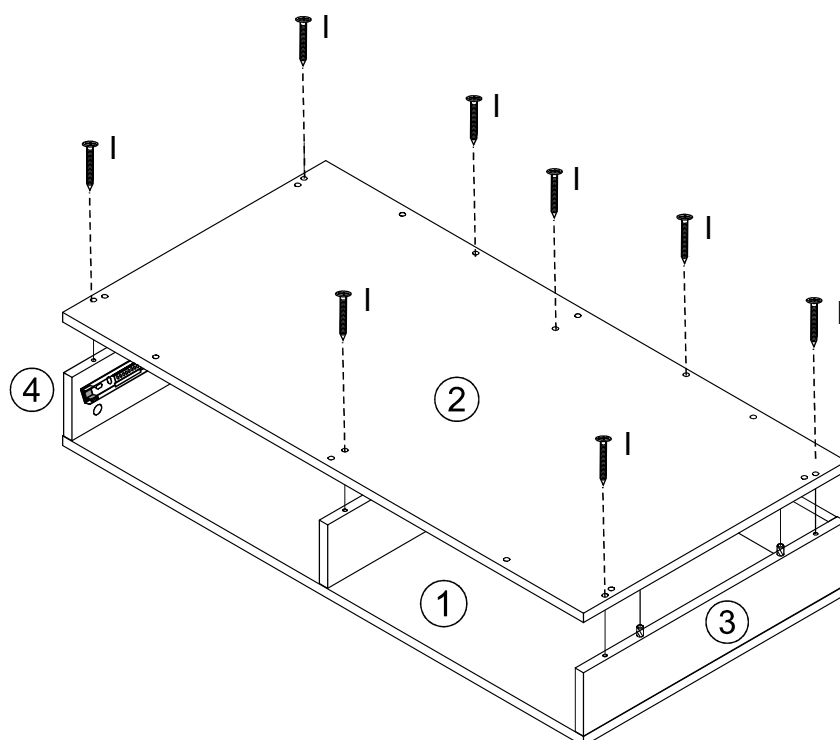
STEP 5:

1. Insert part F into panels 3, 4, and 5.



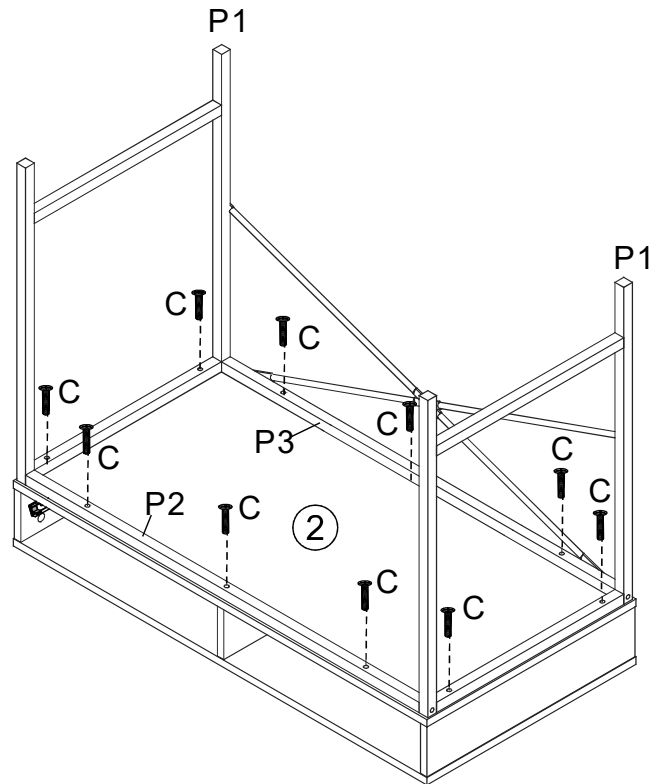
STEP 6:

1. Attach panel 2 to panels 3 and 4 with part I.



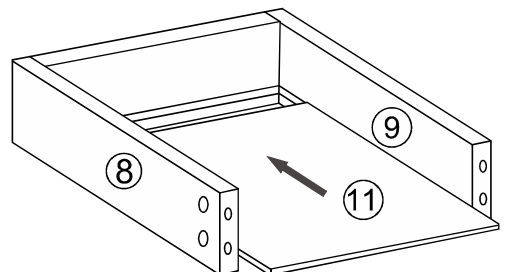
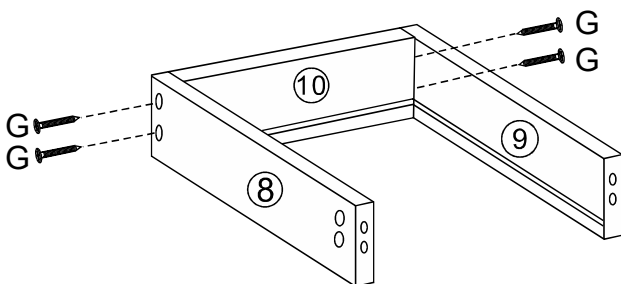
STEP 5:

1. Attach frames P1, P2 and P3 to panel 2 with part C.



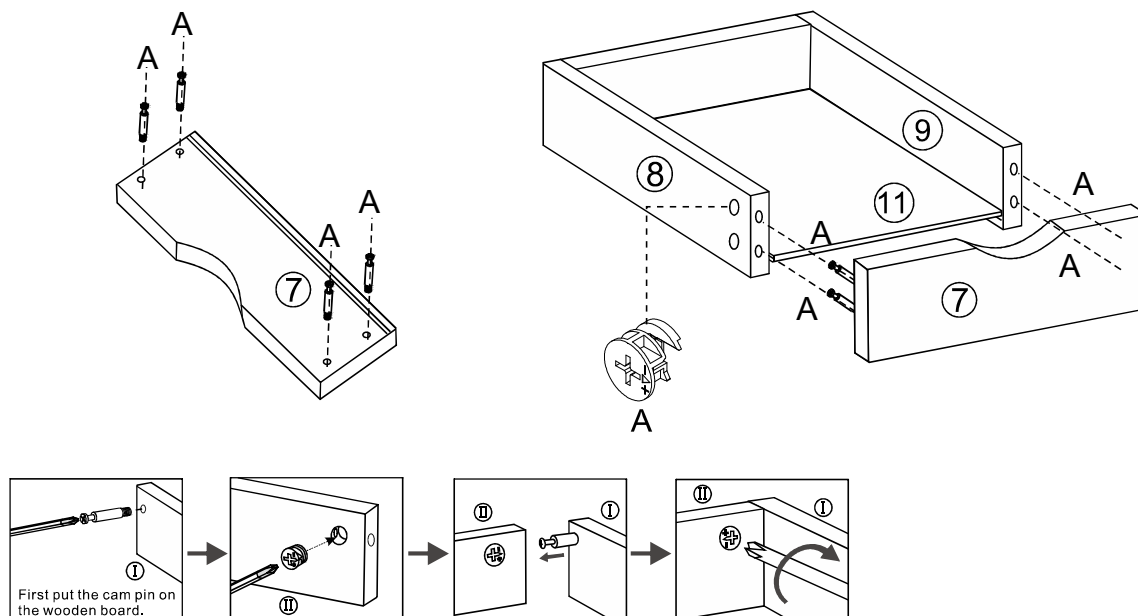
STEP 6:

1. Attach panels 8 and 9 to panel 10 with part G.
2. Slide panel 11 along slots of panels 8 and 9.



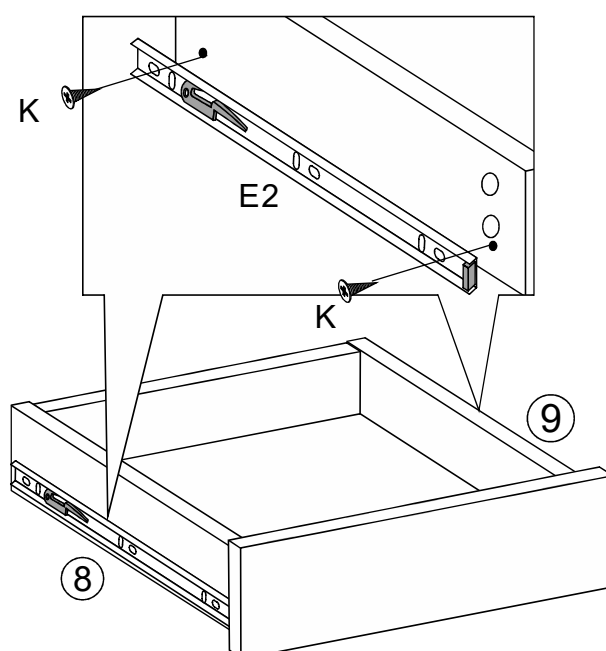
STEP 7:

1. Insert part A into panel 7.
2. Attach panel 7 to panels 8 and 9 with part A.



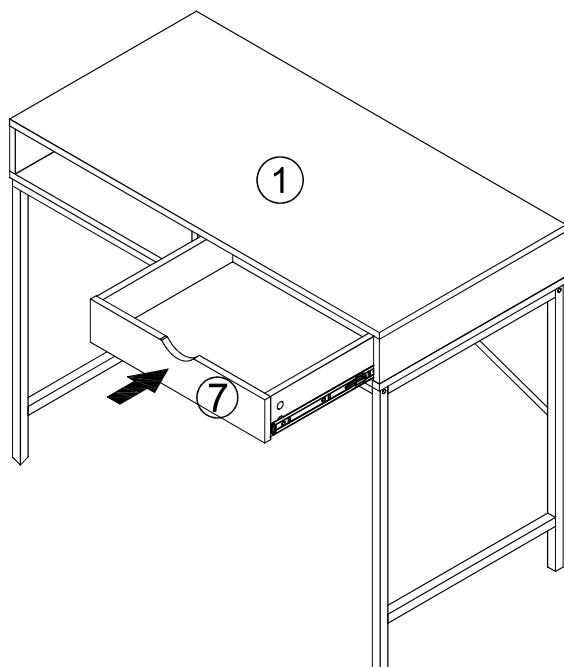
STEP 8:

1. Attach part E2 to panels 8 and 9 with part K.



STEP 9:

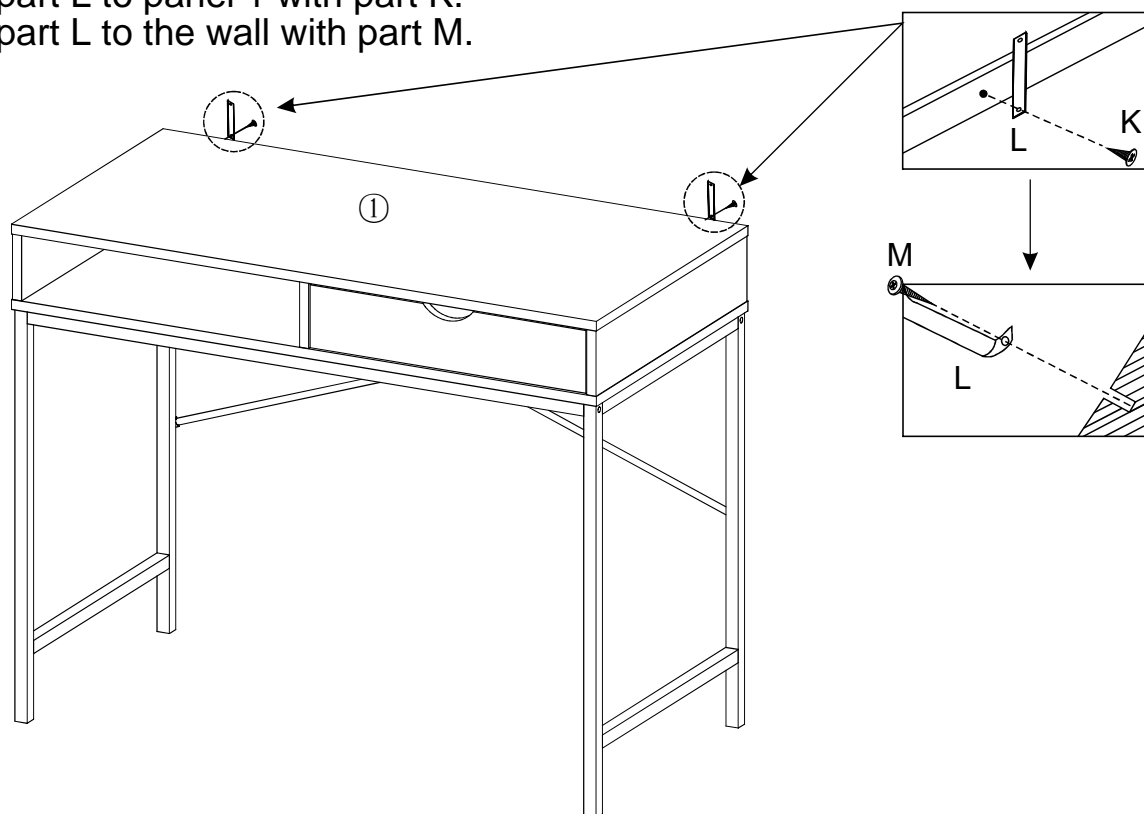
1. Install drawer 7 into the cabinet, ensure runners are correctly aligned.



STEP 10:

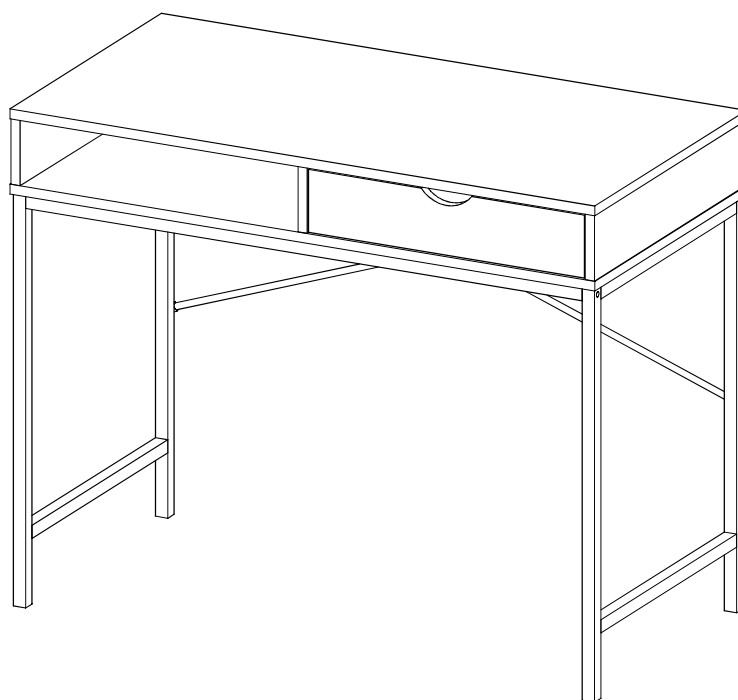
Install Tip Kit

1. Attach part L to panel 1 with part K.
2. Attach part L to the wall with part M.



STEP 11:

Assembly complete!



To protect your furniture, we suggest the following:

- Avoid placing your furniture in direct sunlight.
- Do not place furniture directly under windows.
- Do not place sharp materials (knife, fork, etc.) directly onto your furniture as sharp material may scrape and damage the finish.
- Do not place material with high temperature directly onto the surface of your furniture.
- Clean up spills quickly. Water left over a prolonged period of time may cause damage. Alcohol, perfume, nail polishes, aftershave and some medication may cause severe finish damage if not cleaned immediately.
- Use a clean, soft, dry, lint free absorbent cloth to clean your furniture. Do not use any detergent as they may contain ingredients that may react and damage the finish.

NOTE: If the above care advise is not adhered to your product warranty may become void